

**CITTA' DI REGGIO CALABRIA**  
**EX MONASTERO DELLA VISITAZIONE**

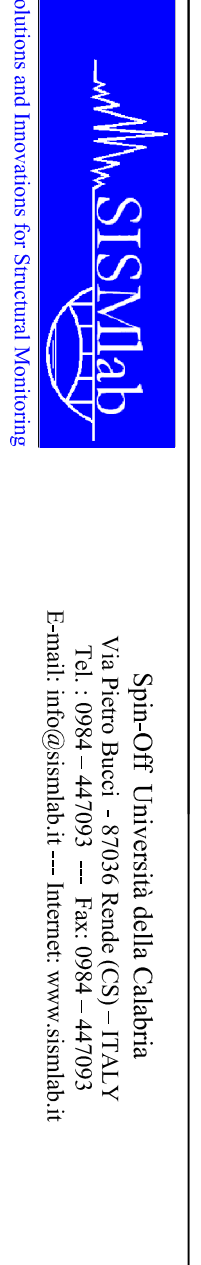
**ANALISI DI DETTAGLIO DEL MANUFATTO**

(OR2)

INDAGINE VISIVA MEDIANTE RICOGNIZIONE  
 FOTOGRAFICA DI DETTAGLIO

ELABORATO:  
 RICOGNIZIONE FOTOGRAFICA DEI  
 PARTICOLARI COSTRUTTIVI - Piano Primo -

DATA: 29 NOVEMBRE 2013  
 VERSIONE DEFINITIVA  
 TAV: RFM-V-03b SCALA 1:100



Spina-Off Università della Calabria  
 Via Perno, snc - I-87030 Arcavacata (CS) - Italia  
 Tel. +39 0985 491111  
 E-mail: info@sismab.it - Internet: www.sismab.it

Ing. G. MORCO  
 Responsabile Scientifico  
 SISMIAB S.r.l.

Supporto all'attività di rilievo  
 Ing. F. MORRONE

Ing. D. ROMANO  
 Responsabile Tecnico  
 SISMIAB S.r.l.

Supporto all'elaborazione CAD  
 Ing. G.F. MONTERO

DOCUMENTAZIONE FOTOGRAFICA



Foto n.I.G.01



Foto n.I.G.02

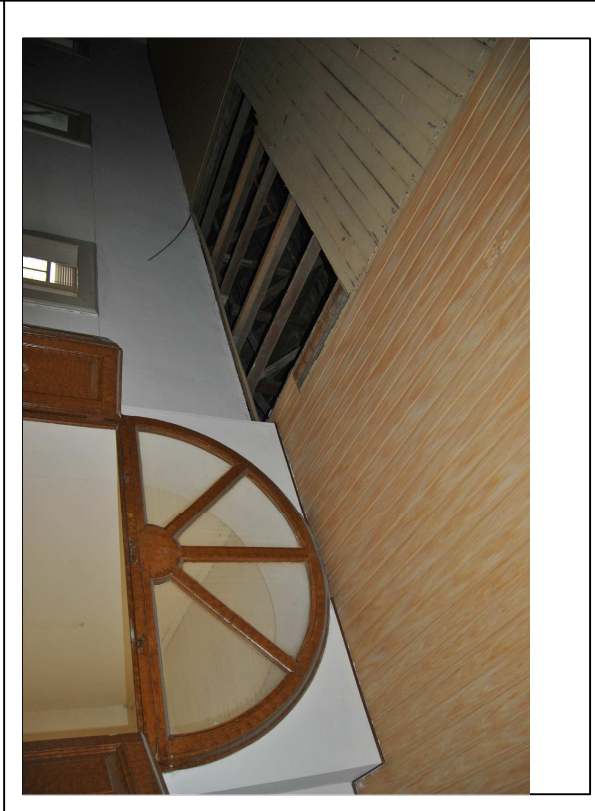


Foto n.I.G.03

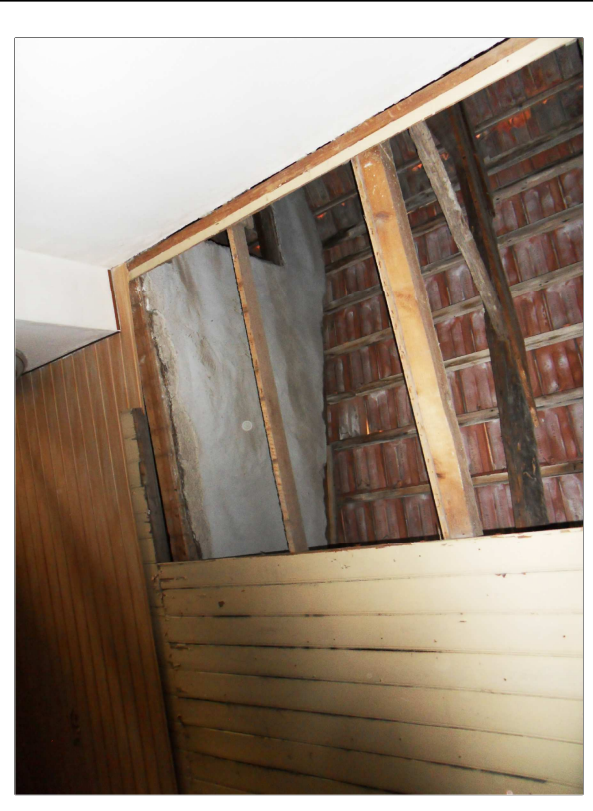


Foto n.I.G.04

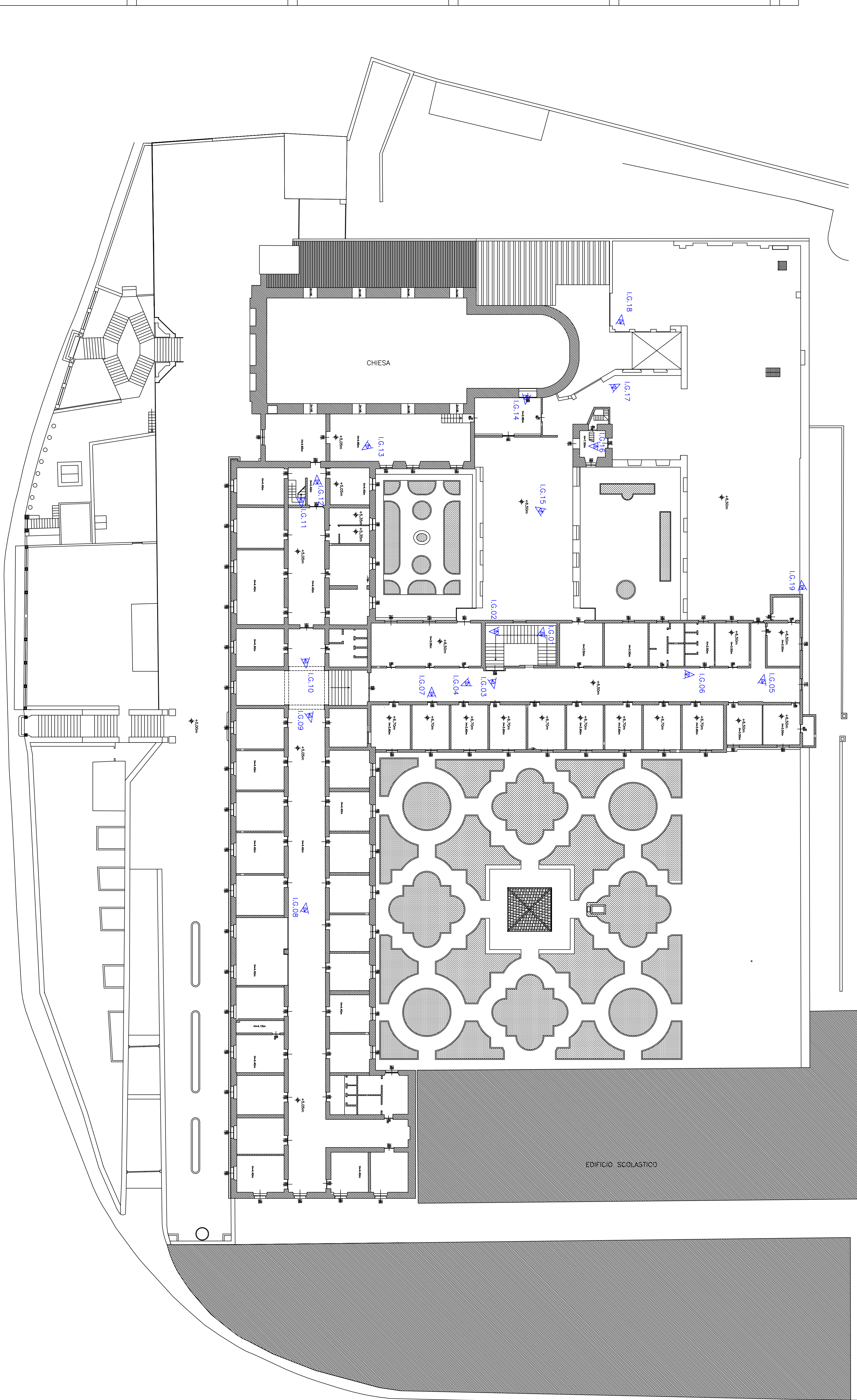


Foto n.I.G.05



Foto n.I.G.06

**PIANTA PIANO PRIMO**  
 Scala 1:200



DOCUMENTAZIONE FOTOGRAFICA



Foto n.I.G.19



Foto n.I.G.18

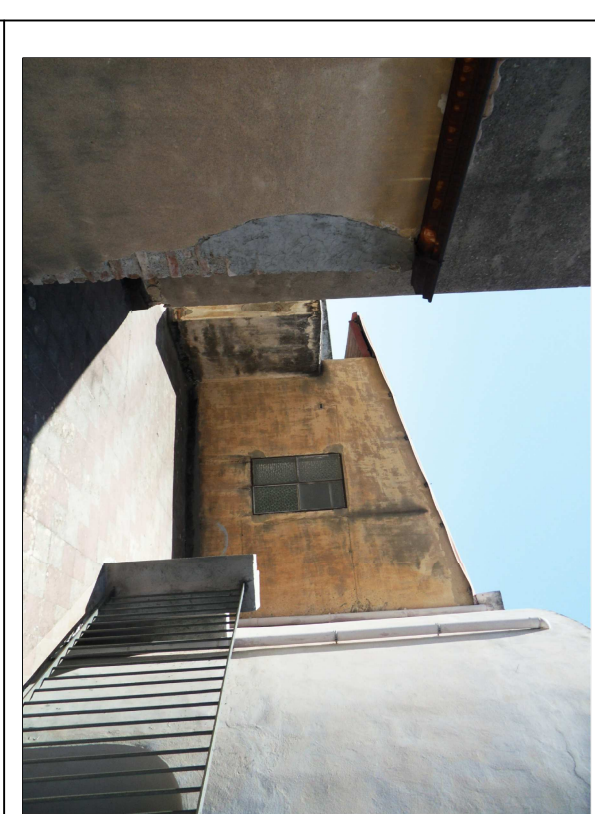


Foto n.I.G.17

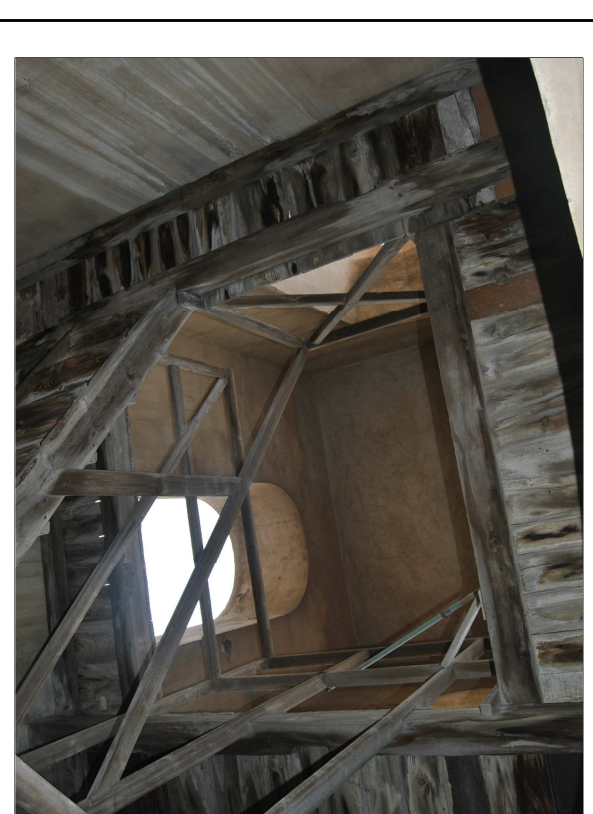


Foto n.I.G.16



Foto n.I.G.15



Foto n.I.G.14

DOCUMENTAZIONE FOTOGRAFICA

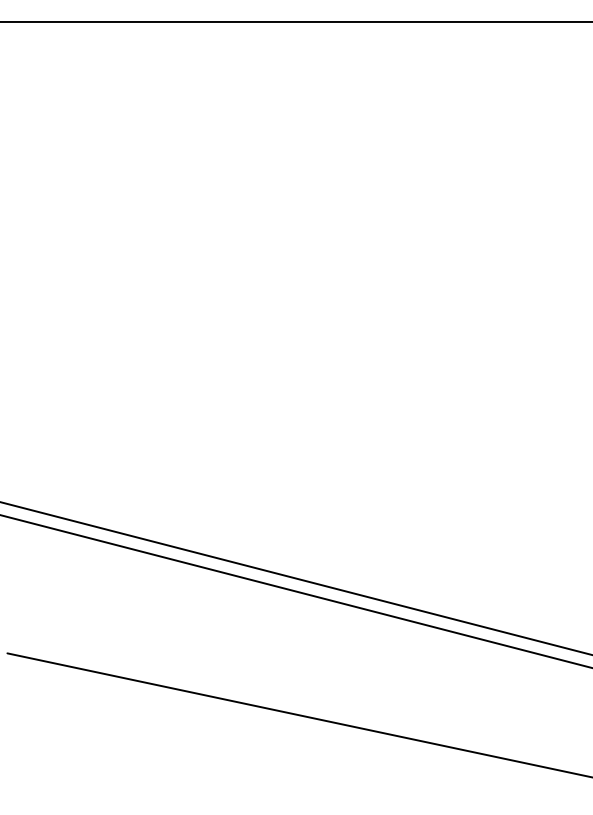


Foto n.I.G.07

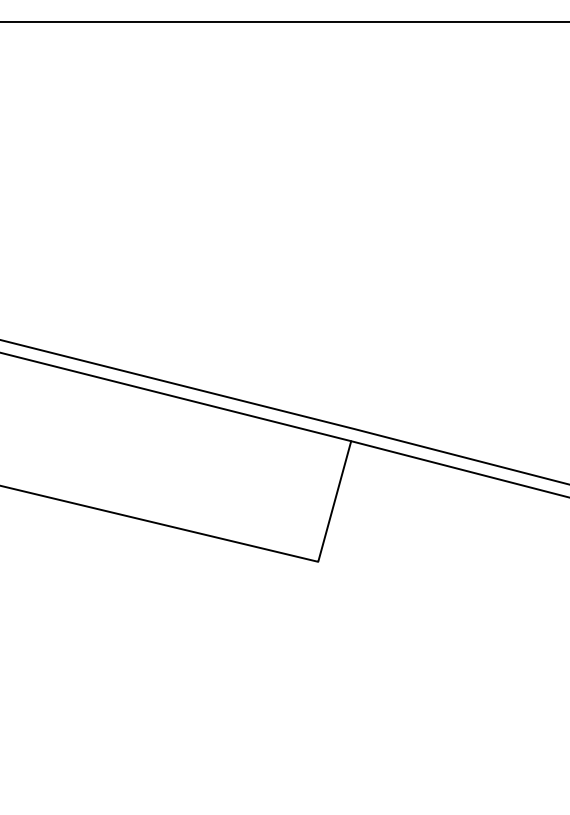


Foto n.I.G.08

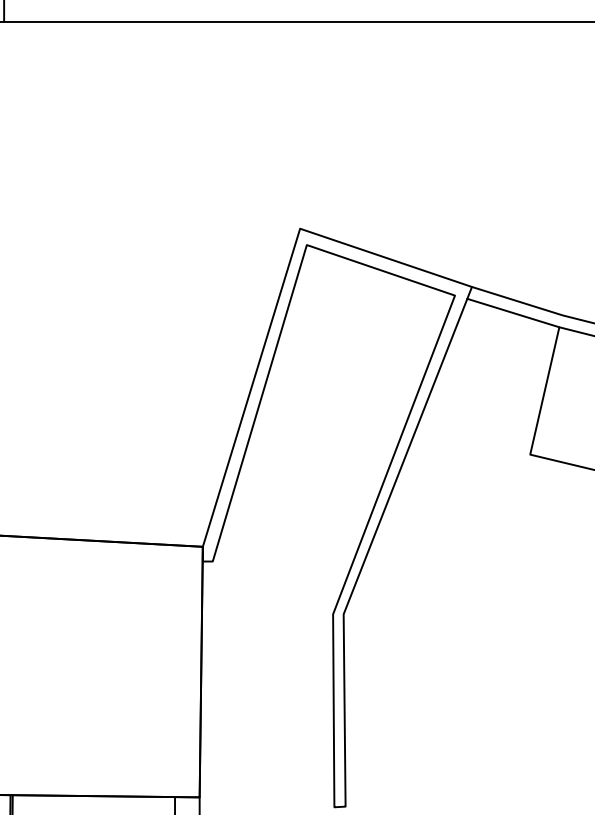


Foto n.I.G.09

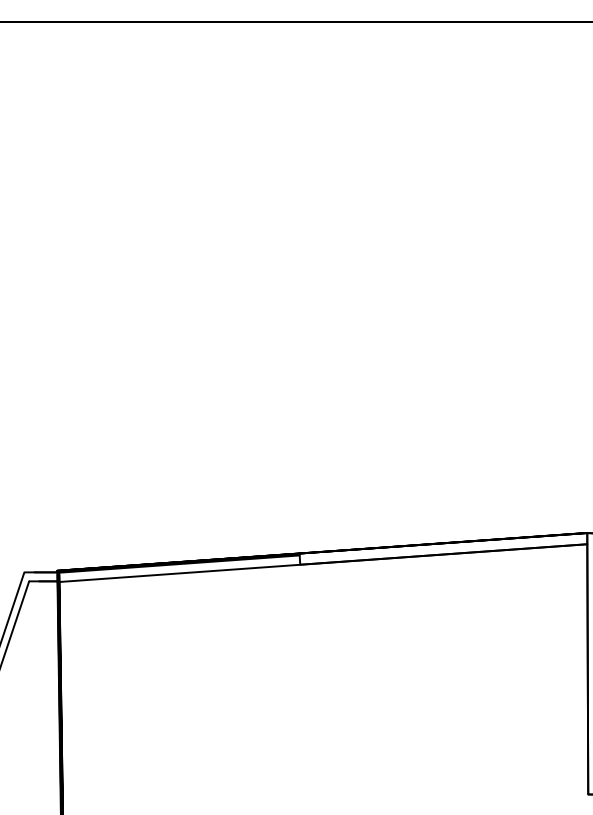


Foto n.I.G.10



Foto n.I.G.11



Foto n.I.G.12

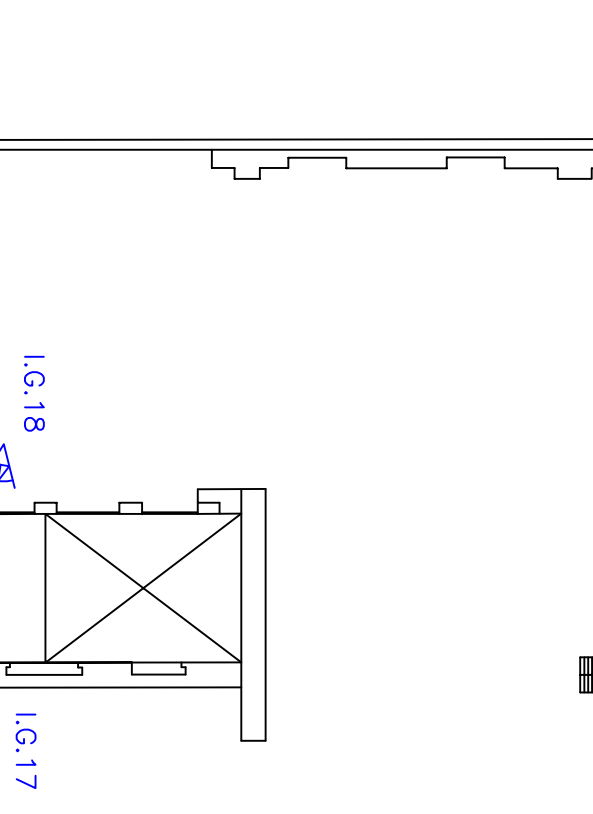


Foto n.I.G.13

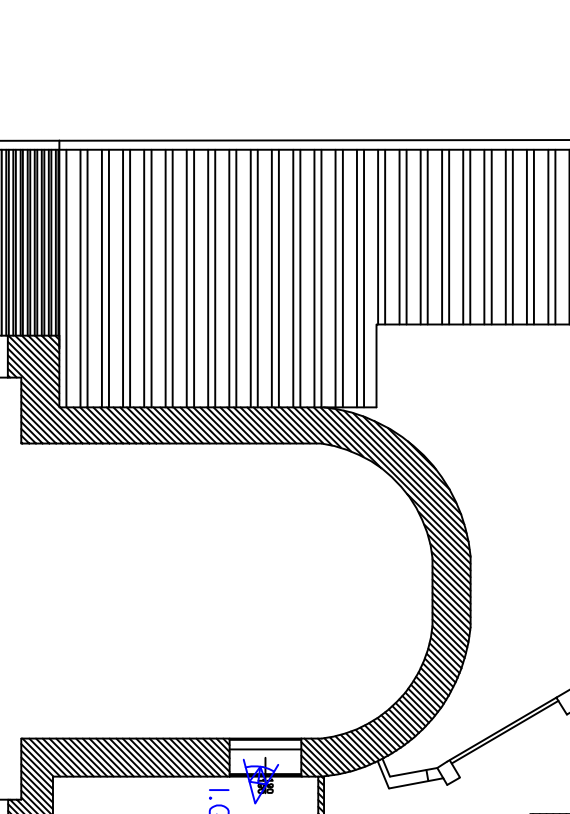


Foto n.I.G.14

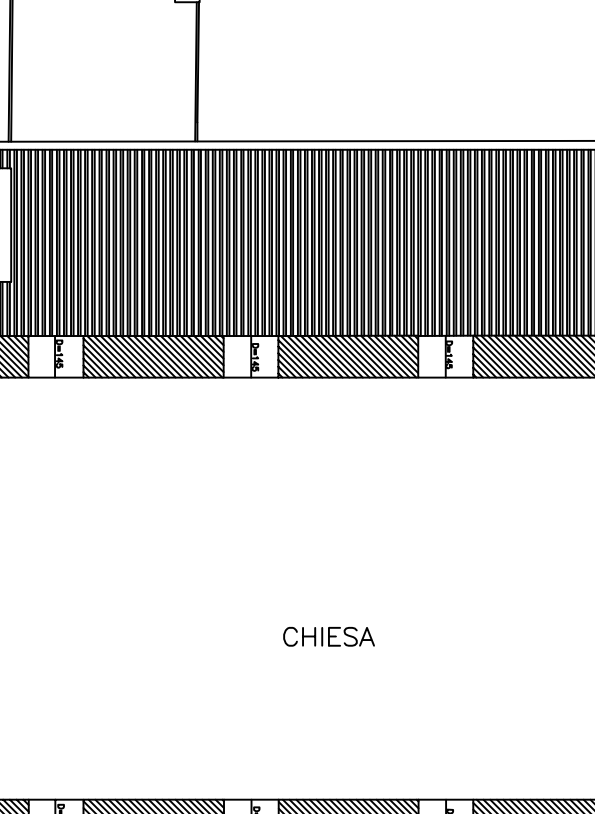


Foto n.I.G.15

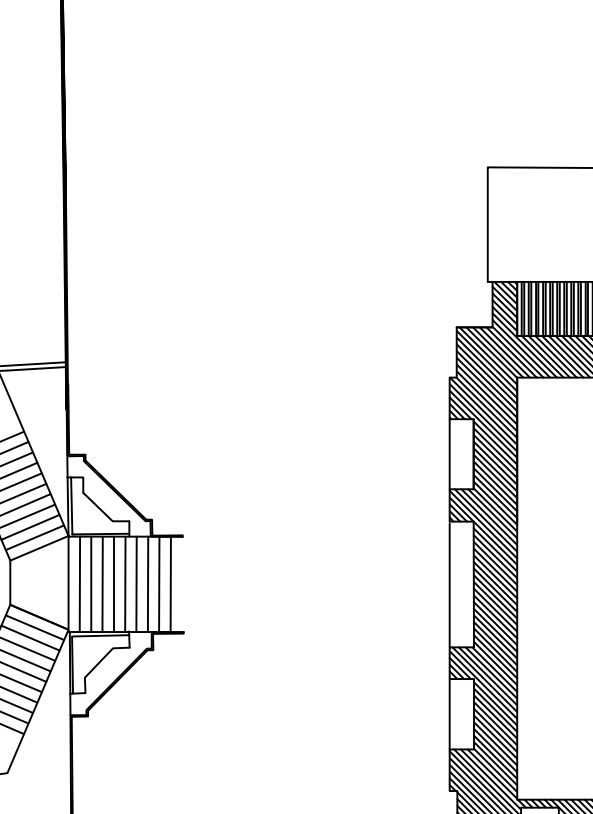


Foto n.I.G.16

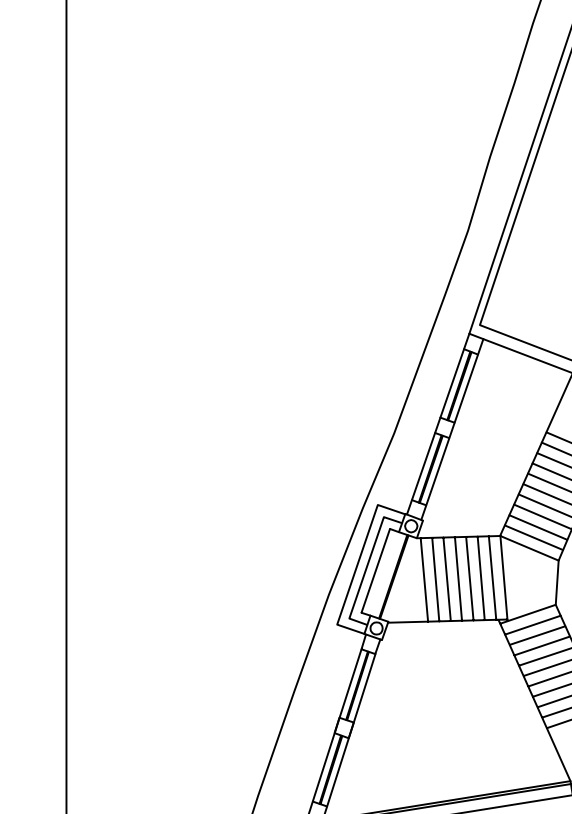


Foto n.I.G.17



Foto n.I.G.18

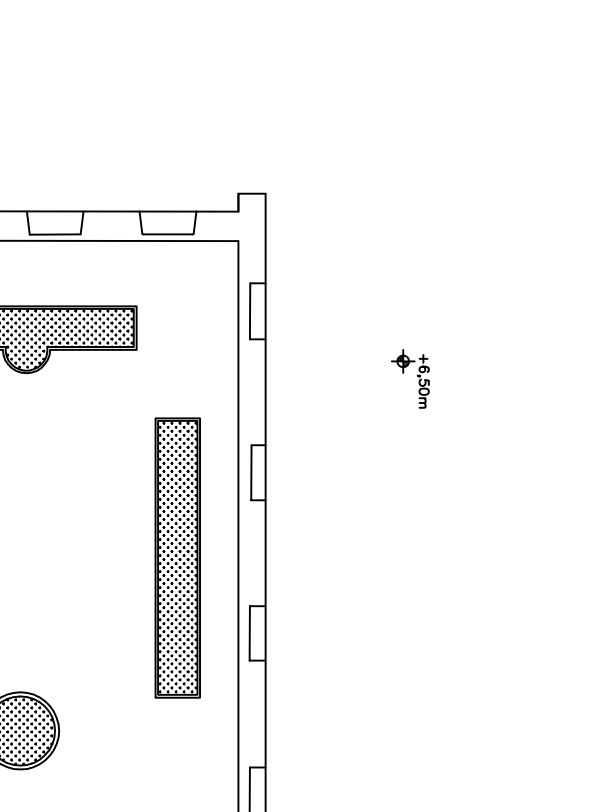


Foto n.I.G.19